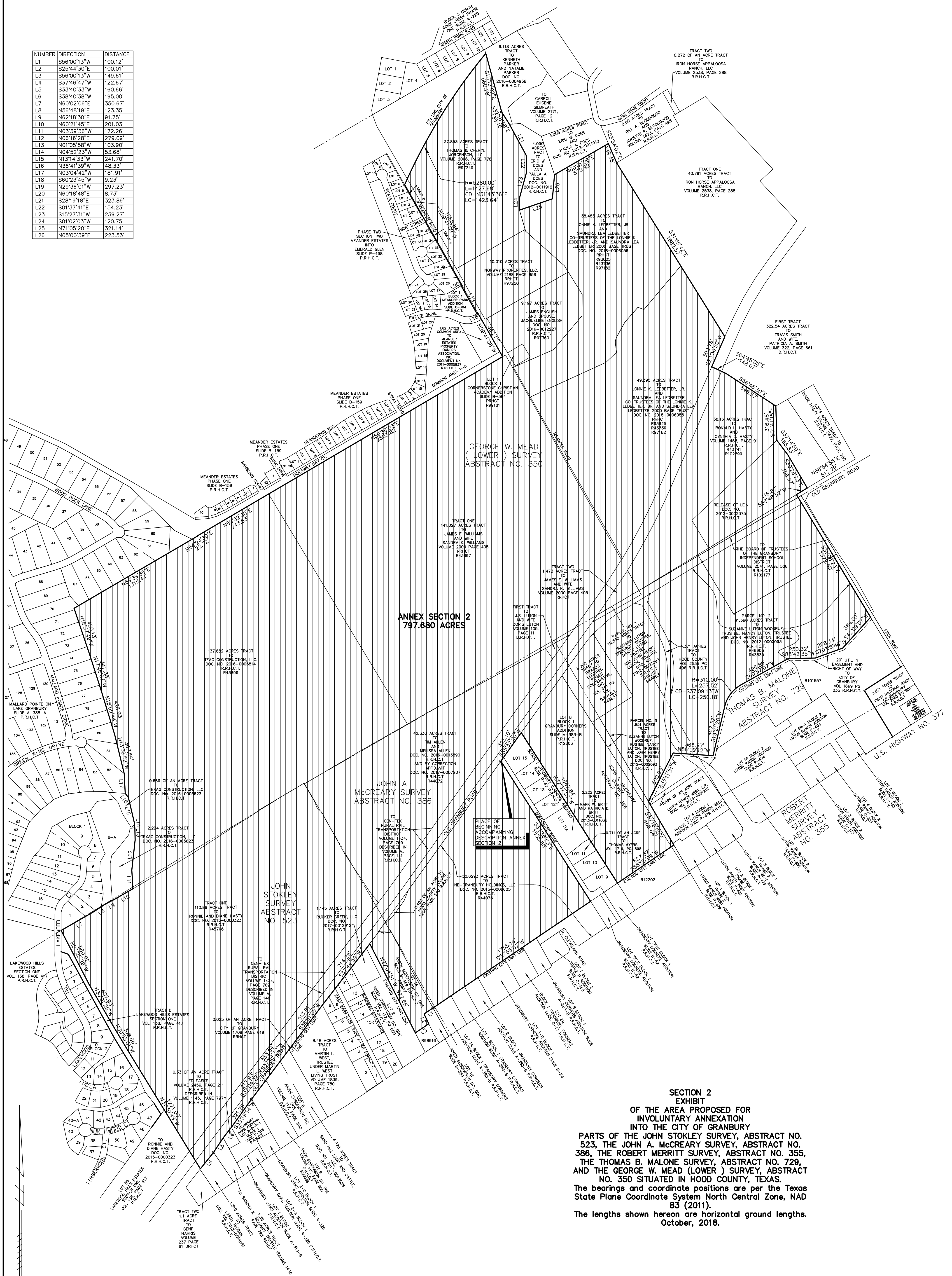


NUMBER	DIRECTION	DISTANCE
L1	S56°00'13"W	100.12'
L2	S25°44'30"E	100.01'
L3	S56°00'13"W	149.61'
L4	S37°46'47"W	122.67'
L5	S33°40'33"W	160.66'
L6	S38°40'38"W	195.00'
L7	N60°02'06"E	350.67'
L8	N56°48'19"E	123.35'
L9	N62°18'30"E	91.75'
L10	N60°21'45"E	201.03'
L11	N03°39'36"W	172.26'
L12	N06°16'28"E	279.09'
L13	N01°05'58"W	103.90'
L14	N04°52'23"W	53.68'
L15	N13°14'33"W	241.70'
L16	N36°41'39"W	48.33'
L17	N03°04'42"W	181.91'
L18	S60°23'45"W	9.23'
L19	N29°36'01"W	297.23'
L20	N60°18'48"E	8.73'
L21	S28°19'18"E	323.89'
L22	S01°37'41"E	154.23'
L23	S15°27'31"W	239.27'
L24	S01°02'03"W	120.75'
L25	N71°05'20"E	321.14'
L26	N05°00'39"E	223.53'



SECTION 2
EXHIBIT
OF THE AREA PROPOSED FOR
INVOLUNTARY ANNEXATION
INTO THE CITY OF GRANBURY
PARTS OF THE JOHN STOKLEY SURVEY, ABSTRACT NO.
523, THE JOHN A. MCCREARY SURVEY, ABSTRACT NO.
386, THE ROBERT MERRITT SURVEY, ABSTRACT NO. 355,
THE THOMAS B. MALONE SURVEY, ABSTRACT NO. 729,
AND THE GEORGE W. MEAD (LOWER) SURVEY, ABSTRACT
NO. 350 SITUATED IN HOOD COUNTY, TEXAS.
 The bearings and coordinate positions are per the Texas
 State Plane Coordinate System North Central Zone, NAD
 83 (2011).
 The lengths shown hereon are horizontal ground lengths.
 October, 2018.

