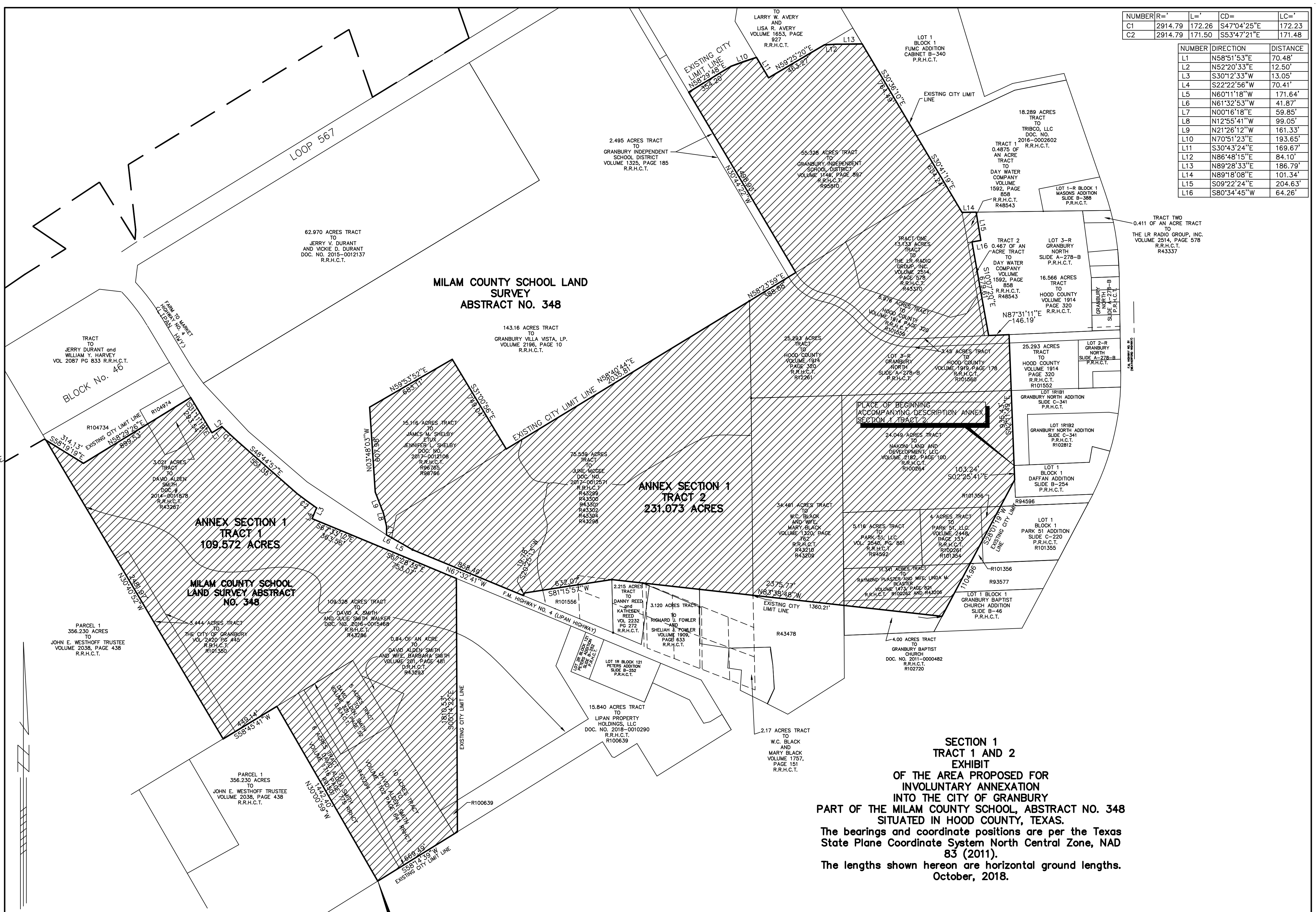


NUMBER	R='	L='	CD=	LC='
C1	2914.79	172.26	S47°04'25"E	172.23
C2	2914.79	171.50	S53°47'21"E	171.48

NUMBER	DIRECTION	DISTANCE
L1	N58°51'53"E	70.48'
L2	N52°20'33"E	12.50'
L3	S30°12'33"W	13.05'
L4	S22°22'56"W	70.41'
L5	N60°11'18"W	171.64'
L6	N61°32'53"W	41.87'
L7	N00°16'18"E	59.85'
L8	N12°55'41"W	99.05'
L9	N21°26'12"W	161.33'
L10	N70°51'23"E	193.65'
L11	S30°43'24"E	169.67'
L12	N86°48'15"E	84.10'
L13	N89°28'33"E	186.79'
L14	N89°18'08"E	101.34'
L15	S09°22'24"E	204.63'
L16	S80°34'45"W	64.26'



MILAM COUNTY SCHOOL LAND SURVEY ABSTRACT NO. 348

ANNEX SECTION 1 TRACT 2 231.073 ACRES

ANNEX SECTION 1 TRACT 1 109.572 ACRES

MILAM COUNTY SCHOOL LAND SURVEY ABSTRACT NO. 348

SECTION 1 TRACT 1 AND 2 EXHIBIT OF THE AREA PROPOSED FOR INVOLUNTARY ANNEXATION INTO THE CITY OF GRANBURY PART OF THE MILAM COUNTY SCHOOL, ABSTRACT NO. 348 SITUATED IN HOOD COUNTY, TEXAS.

The bearings and coordinate positions are per the Texas State Plane Coordinate System North Central Zone, NAD 83 (2011).
The lengths shown hereon are horizontal ground lengths.
October, 2018.

PLACE OF BEGINNING ACCOMPANYING DESCRIPTION ANNEX SECTION 1 TRACT 1.

